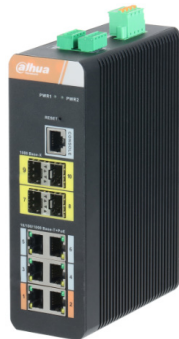


DH-PFS4410-6GT-DP

10-Port Gigabit Industrial Switch with 6-Port Gigabit PoE (Managed)



Product Overview

DH-PFS4410-6GT-DP is a 10-Port Gigabit Industrial Switch with 6-Port Gigabit PoE which supports IEEE 802.3af/at. Moreover, port 1&2 (orange port) support Hi-PoE, which provides maximum 60W via a single port.

DH-PFS4410-6GT-DP is a Layer 2 managed industrial PoE switch, which supports web, SNMP and also CLI. It supports ring network redundancy using standard STP/RSTP/MSTP protocol and also supports rich features such as VLAN, Link Aggregation, Port Mirroring, Flow Control, IGMP Snooping, SNMP, ROMN, ACL, QoS, Static IP Routing, etc.

DH-PFS4410-6GT-DP is IP40 rated and DIN-rail mountable. It supports dual power input for power redundancy and wide working temperature range from -40°C~+75°C. It also provides high EFT and ESD protection for industrial networking applications such as outdoor security surveillance, ITS, power, factory and any other outdoor or harsh environment.

Technical Specification

Model	DH-PFS4410-6GT-DP
Ethernet Port	6*10/100/1000 Base-T(PoE power supply) 4*100/1000 Base-X
RS232 Serial Console	1*RS232
RS485 Port	2*RS485 (Baud rate 9600, TCP/UDP)
I/O Port	1*Input, 1*Output
PoE Power Consumption	Each port ≤30W ,Totals≤120W port 1 and port 2 supports Hi-PoE (60W)
PoE Protocol	IEEE802.3af (PoE), IEEE802.3at (PoE+), Hi-PoE
PoE Budget	≤120W
PoE PIN Assignment	1, 2(V+), 3, 6 (V-) 1, 2, 4, 5 (V+), 3, 6, 7, 8 (V-)
Switching Capacity	28Gbps
Packet Forwarding Rate	14.88Mpps
Packet Buffer Memory	4Mb
Application Humidity	10%-90%
Power	DC 9~57V, PoE: 48-57V
Lightning Protection	Common Mode 6KV Differential Mode 4KV

Features

- Layer 2 managed industrial PoE switch
- Supports IEEE802.3af/at and Hi-PoE (60W) standard
- Supports STP/RSTP/MSTP for network redundancy
- Supports rich L2 features including VLAN, Link Aggregation, IGMP Snooping, ROMN, ACL, QoS, etc
- Supports Web, SNMP and CLI management
- IP40 full metal enclosure, fully-sealed and dustproof design
- Dual power input for power redundancy
- Wide working temperature: -40°~+75°C

Working Temperature	-40°C~75°C
Power Consumption (static)	≤6W
Power Consumption (full load)	≤120W
Mounting	DIN-Rail
Weight	1.25kg
Dimension (WxDxH)	175mm x 134mm x 53mm

Accessories

SFP Module	
PFT3950	1.25G 850nm,500m,LC, Multi-mode
PFT3960	1.25G 1310/1550nm,20km,LC, Single-mode
PFT3970	1.25G 1550/1310nm,20km,LC, Single-mode
DIN-Rail Power Supply	
DRL-48V120W1AAD	120W, 100VAC~240VAC-48V2.5A
EDP-75-48	75W, 100VAC~240VAC-48V1.6A

Service Characteristics	
Model	DH-PFS4410-6GT-DP
System	Username / password: admin/admin
	IP Address :192.168.1.110/24
MAC Address Table	8K
NTP	Support
DHCP	Support DHCP client/server
	Support DHCP snooping
VLAN	802.1Q
Port Aggregation	Manual aggregation/LACP
Port Mirroring	Support many-to-one port mirroring
Flow Control	Support half-duplex based on back pressure type control
	Support full duplex based on PAUSE frame
Multicast	IGMP Snooping v1/v2/v3
Security	Support users management
	Support SSH
	Support Https
	Support SNMP V1/V2/V3
	Support ROMN
	Support ACL
	Support IP source guard
	Support ARP inspection
	Support 802.1x
	Support loop protection
Spanning Tree	STP/RSTP/MSTP
LLDP	Support
Quality of Service	Support QoS base on CoS/DPL/PCP/DEI
	Each port support 8 output queue
	Support port shaping
	Support port tag remarking
	Support QoS based on DSCP
System Maintenance	Support the configuration file upload/download
	Support firmware upgrade
	Support system logs
Network Management	WEB(http protocol), SNMP, CLI

